

A.M.C. LIFTBOATS, INC.
A.M.C. MARINE, INC.
USCG CERTIFIED VESSELS



Specifications
for
L/B MR ALAN
(Class 130)



Official Number: D1040047

LIFTBOAT "MR. ALAN"

CLASS 130'
USCG CERTIFIED
Official No.: D1040047

DIMENSIONS

Overall Length	83' - 0"
Length (Hull Only)	75'
Overall Beam	52' - 0"
Beam (Hull Only)	36'
Hull Depth	8'

CHARACTERISTICS

Open Deck	2,150 ft. ²
Maximum Deck Capacity (Afloat)	150,000 lbs.
Maximum Deck Capacity (Elevated)	170,000 lbs.
Deck Strength (max. point load)	750 lbs. /ft. ²

LEGS

Quantity	3
Diameter	36" O.D.
Wall Thickness	3/4"

PADS

Length	24'
Width	12'

CRANES

Quantity	2
Capacity of Port Crane	40 Ton
Boom Length	100' Tele.
Capacity of Stbd. Crane	40 Ton
Boom Length	100' Tele.

GENERATORS

Two (2)	75 KW
---------	-------

LIVING QUARTERS

Berths	28
Includes a 2 Man Company Room	
Satellite TV & Central Air and Heat	
Heads	5
Showers	5
Galley Seats	28
Refrigerators	2
Freezers	3
Ice Maker	
Range	
Washer & Dryer	

COMMUNICATION / NAVIGATION

VHF Radio	2
GPS	1
Radar	1

PROPULSION

Main Engines (Cummins)	2KT19M
Estimated Speed (knots)	6.5

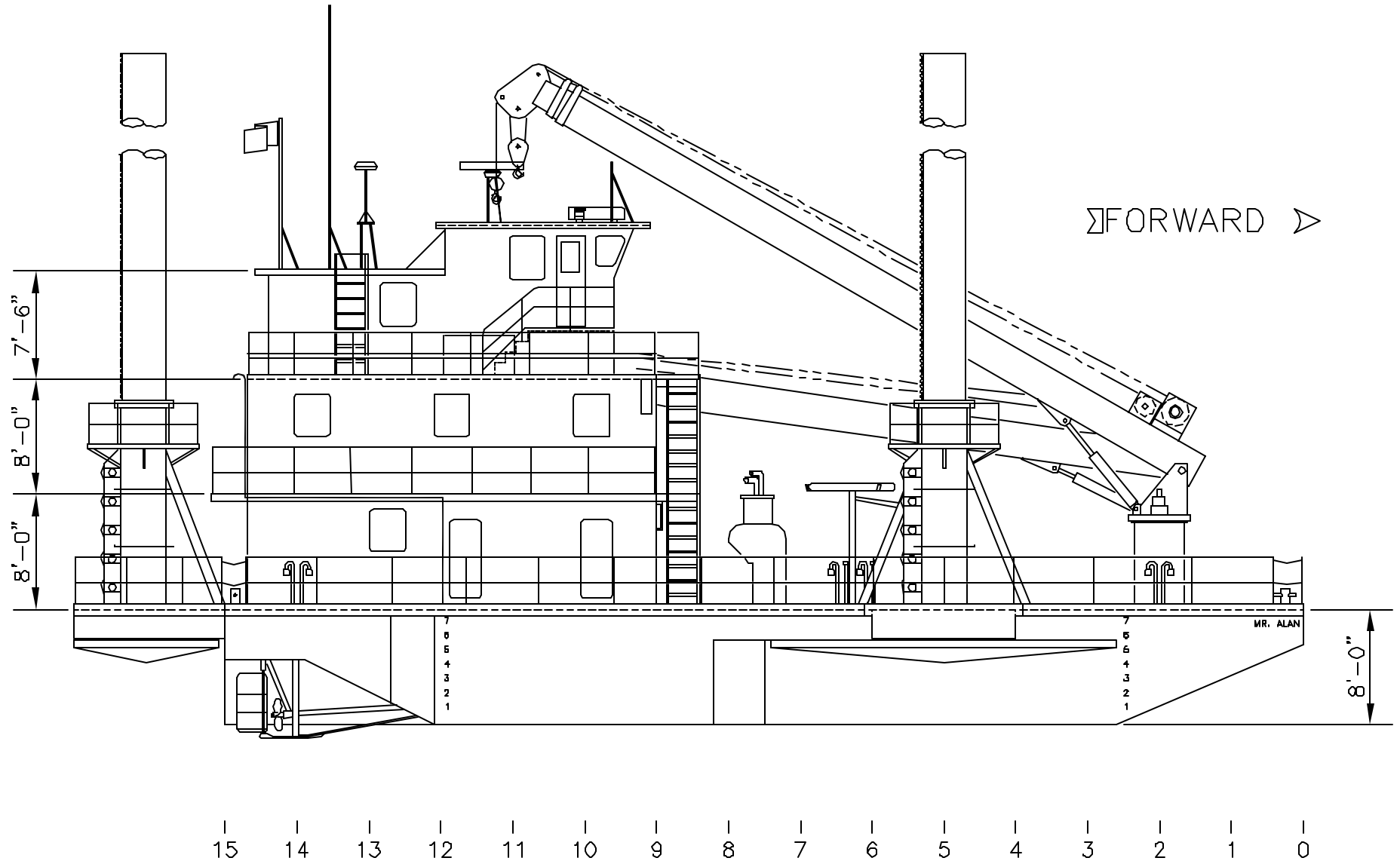
WORKING CONDITIONS

Maximum Water Depth	82'
Maximum Jacking Seas	5'

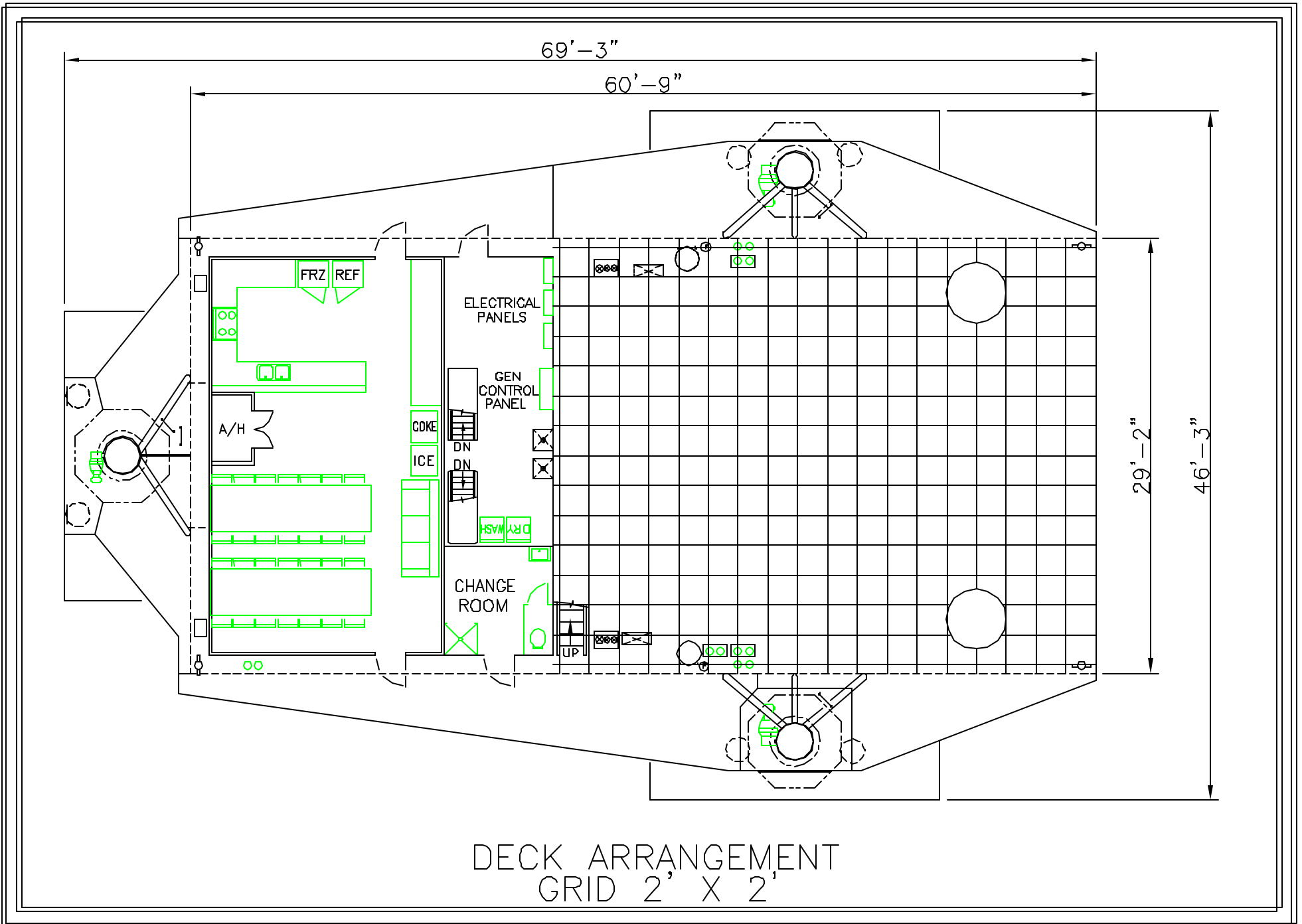
Capacities

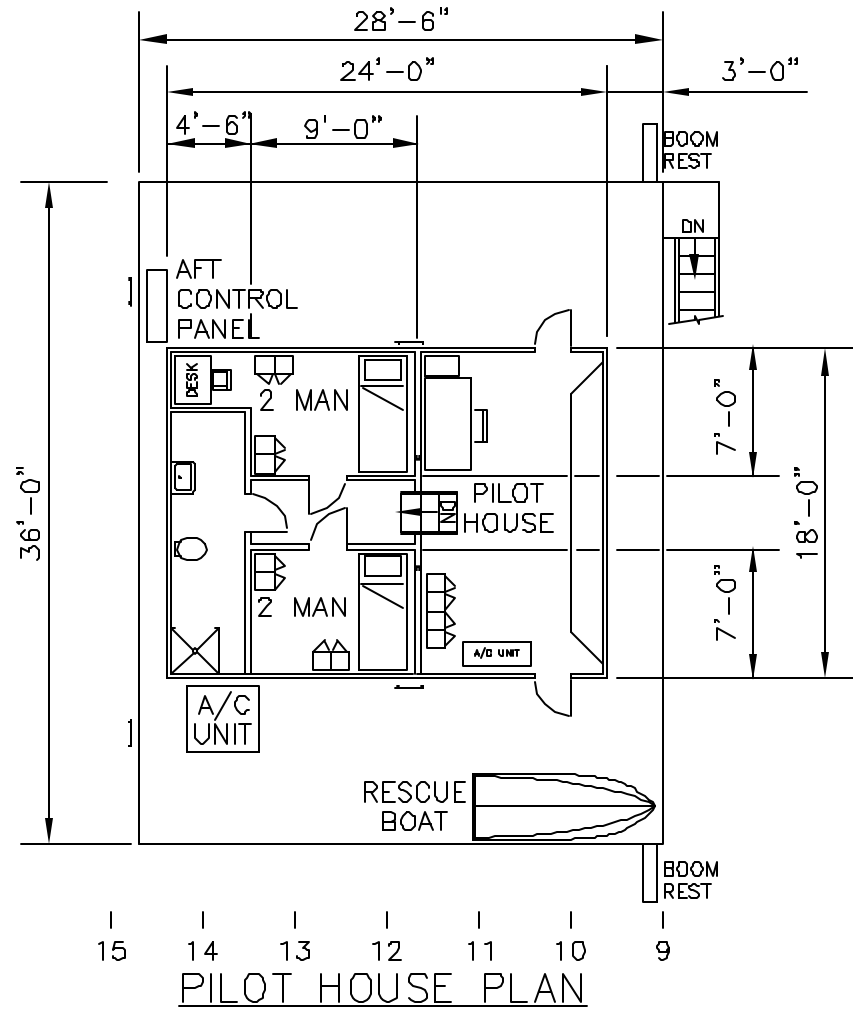
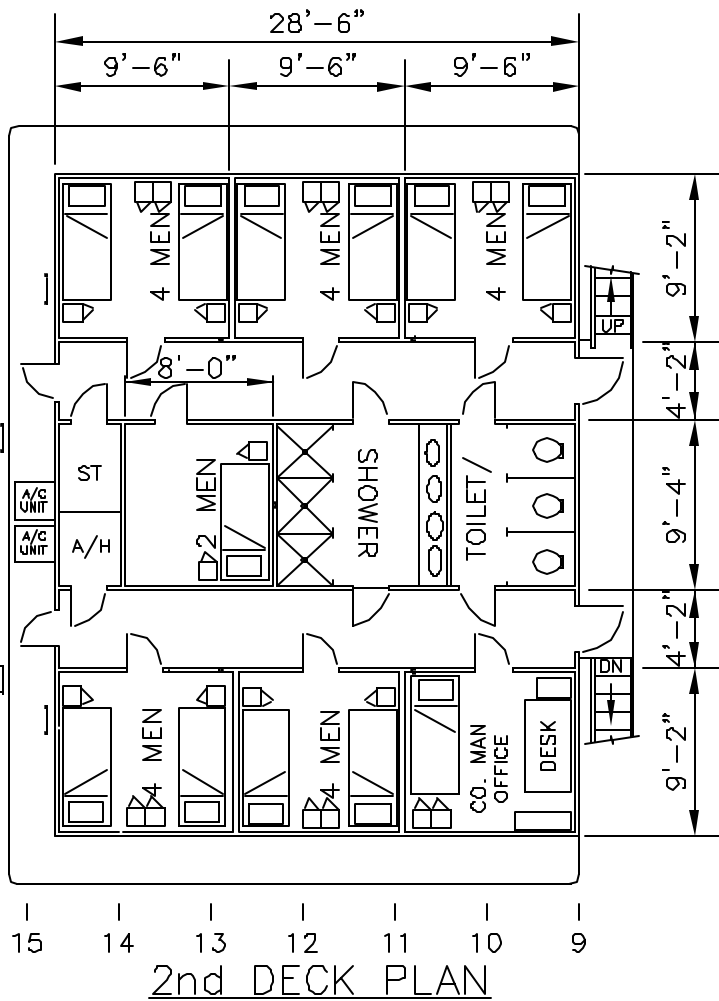
Fuel	4,000 Gal.
Potable Water	9,000 Gal.

Gross Tonnage	Under 100
----------------------	-----------



STARBOARD PROFILE





QUARTERS ARRANGEMENT

85 FT. EXTENDED						100 FT. EXTENDED					
REACH (FT.)	BOOM ANGLE (DEG.)	LOAD LINE (lbs.)		FAST LINE (lbs.)		REACH (FT.)	BOOM ANGLE (DEG.)	LOAD LINE (lbs.)		FAST LINE (lbs.)	
		DYNAMIC LOAD	STATIC LOAD	DYNAMIC LOAD	STATIC LOAD			DYNAMIC LOAD	STATIC LOAD	DYNAMIC LOAD	STATIC LOAD
10	83	37000	54300	4900	4900	10	84	25200	38500	4900	4900
15	80	30850	46975	4900	4900	15	81.5	21300	32650	4900	4900
20	76.5	24200	37000	4900	4900	20	78.5	17850	27475	4900	4900
25	73	19350	29725	4900	4900	25	75.5	15250	23575	4900	4900
30	69.5	16150	24925	4900	4900	30	72.5	13100	20350	4900	4900
35	66	13800	21400	4900	4900	35	69.5	11750	18325	4900	4900
40	62	11850	18475	4900	4900	40	66.5	11100	17350	4900	4900
45	58	10400	16300	4900	4900	45	63.5	9700	15250	4900	4900
50	54	9250	14575	4900	4900	50	60	8450	13375	4900	4900
55	50	8350	13225	4900	4900	55	57	7600	12100	4900	4900
60	45.5	7550	12025	4900	4900	60	53	6700	10750	4900	4900
65	40.5	6800	10900	4900	4900	65	49.5	6050	9775	4900	4900
70	35	6150	9925	4900	4900	70	46	5500	8950	4900	4900
75	28	5550	9025	4900	4900	75	41.5	4900	8050	4900	4900
80	20	4950	8125	4900	4900	80	37	4450	7375	4450	4900
85	0	3750	6325	3750	4900	85	32	4000	6700	4000	4900
						90	26	3550	6025	3550	4900
						95	18.5	3100	5350	3100	4900
						100	0	2150	3925	2150	3925
API PEDESTAL REACTIONS											
MAXIMUM OTM =				2,524,300 FT. LBS.						2,448,300 FT. LBS.	
CORRESPONDING AXIAL FORCE =				60,790 LBS.						55,240 LBS.	
MAXIMUM AXIAL FORCE =				156,940 LBS.						121,540 LBS.	
CORRESPONDING OTM =				1,257,700 FT. LBS.						884,400 FT. LBS.	
BASIC CRANE WEIGHT =				41,750 LBS.						41,750 LBS.	

- (REACTIONS @ 3 X DYNAMIC RATED LOAD)
- (OTM = OVERTURNING MOMENT)
- REACH = CENTER OF BASE ROTATION TO CENTER OF LOAD LINE SHEAVE

IN ACCORDANCE WITH API-2C, VALUES SHOWN ARE ACTUAL HOOK LOADS (WEIGHT OF BLOCK AND HOOK EXCLUDED).
 LOAD LINE BLOCK WEIGHT IS 1300 LBS.
 LOAD LINE (4 PART LINE): 1" 6x25 EIPS IWRC; 100,000 LB. BREAKING STRENGTH; 20,000 LB. WORKING STRENGTH.
 FAST LINE BLOCK IS 100 LBS.
 FAST LINE (1 PART LINE): 9/16" 19x7 EIPS IWRC; 25,000 LB. BREAKING STRENGTH; 5000 LB. WORKING STRENGTH.
 STATIC LOAD = 1.5 x DYNAMIC LOAD
 PEDESTAL REACTIONS ARE BASED ON THREE TIMES THE DYNAMIC LOAD PLUS DEAD LOAD
 PERSONNEL HANDLING LOAD = LESSER OF: DYN. LOAD DIVIDED BY 2 OR NOMINAL STRENGTH DIVIDED BY 10

56 FT. FULLY RETRACTED						70FT. EXTENDED					
REACH (FT.)	BOOM ANGLE (DEG.)	LOAD LINE (lbs.)		FAST LINE (lbs.)		REACH (FT.)	BOOM ANGLE (DEG.)	LOAD LINE (lbs.)		FAST LINE (lbs.)	
		DYNAMIC LOAD	STATIC LOAD	DYNAMIC LOAD	STATIC LOAD			DYNAMIC LOAD	STATIC LOAD	DYNAMIC LOAD	STATIC LOAD
10	79.5	47300	71650	4900	4900	10	81.5	42600	54600	4900	4900
15	74.5	34200	52000	4900	4900	15	77.5	32300	49150	4900	4900
20	69	26550	40525	4900	4900	20	73.5	25200	38500	4900	4900
25	63.5	21925	33588	4900	4900	25	69	20300	31150	4900	4900
30	58	18850	28975	4900	4900	30	64.5	17050	26275	4900	4900
35	51.5	16300	25150	4900	4900	35	60	14750	22825	4900	4900
40	45	14550	22525	4900	4900	40	55.5	13050	20275	4900	4900
45	37	12500	19450	4900	4900	45	50	11500	17950	4900	4900
50	27	10850	16975	4900	4900	50	45	10400	16300	4900	4900
55	11	9500	14950	4900	4900	55	38.5	9350	14725	4900	4900
56	0	9150	14425	4900	4900	60	31	8450	13375	4900	4900
						65	22	7600	12100	4900	4900
						70	0	6000	9700	4900	4900
API PEDESTAL REACTIONS											
MAXIMUM OTM =						2,547,900 FT. LBS.					
CORRESPONDING AXIAL FORCE =						74,440 LBS.					
MAXIMUM AXIAL FORCE =						187,850 LBS.					
CORRESPONDING OTM =						1,589,800 FT. LBS.					
BASIC CRANE WEIGHT =						41,750 LBS.					

- (REACTIONS @ 3 X DYNAMIC RATED LOAD)
- (OTM = OVERTURNING MOMENT)
- REACH = CENTER OF BASE ROTATION TO CENTER OF LOAD LINE SHEAVE

IN ACCORDANCE WITH API 2C, VALUES SHOWN ARE ACTUAL HOOK LOADS (WEIGHT OF BLOCK AND HOOK EXCLUDED).
 LOAD LINE BLOCK WEIGHT IS 1300 LBS.
 LOAD LINE (4 PART LINE): 1" 6x25 EIPS IWRC; 100,000 LB. BREAKING STRENGTH; 20,000 LB. WORKING STRENGTH.
 FAST LINE BLOCK IS 100 LBS.
 FAST LINE (1 PART LINE): 9/16" 19x7 EIPS IWRC; 25,000 LB. BREAKING STRENGTH; 5000 LB. WORKING STRENGTH.
 STATIC LOAD = 1.5 x DYNAMIC LOAD
 PEDESTAL REACTIONS ARE BASED ON THREE TIMES THE DYNAMIC LOAD PLUS DEAD LOAD
 PERSONNEL HANDLING LOAD = LESSER OF: DYN. LOAD DIVIDED BY 2 OR NOMINAL STRENGTH DIVIDED BY 10